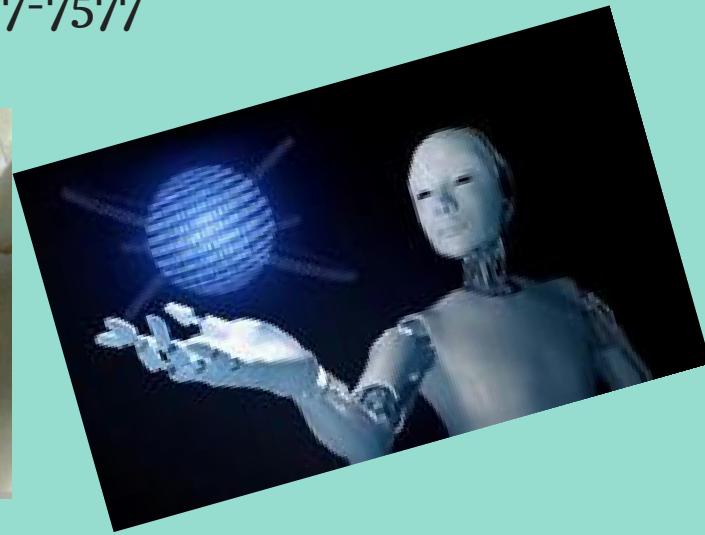
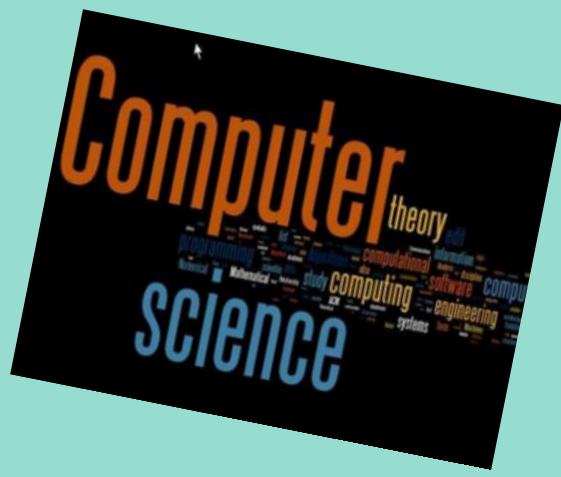


# 2017 International Conference on Computer Science and Artificial Intelligence

December 5-7, 2017 at HARRIS Hotel & Conventions Kelapa Gading - Jakarta, Indonesia

Web: [www.csai.org](http://www.csai.org) E-mail: [csai@young.ac.cn](mailto:csai@young.ac.cn) Tel: +86-28-8777-7577



## PUBLICATION

Accepted papers will be included in the conference proceedings, which will be published with International Conference Proceedings Series by ACM and be indexed by Ei Compendex and reviewed by Scopus.

## Topics

Computer Architecture  
Computer Networks  
Computer Vision  
Methods and Techniques for Software Development  
Computational and Artificial Intelligence  
Data Communication and Networking  
Embedded systems  
Knowledge Management  
Mining Data, Text, and the Web  
Mobile computing  
Distributed Computing and Cooperative Computing  
Artificial Intelligence and Intelligent Computing  
Semantic Analysis and Knowledge Engineering

Multimedia DB's  
Advanced Database  
Artificial Intelligence  
Networks and Systems  
Operating Systems  
Signal Processing  
Data Management  
Data Mining  
Big data and Cloud Computing  
Parallel and Distributed Computing  
Big Data and Intelligent Computing  
Machine Learning and Pattern Recognition  
Computational Thinking and Education Analysis  
Reconfigurable computing Sensor networks



## KEYNOTE SPEAKERS

Prof. Hossein Sarrafzadeh  
Unitec Institute of Technology, New Zealand

Prof. Nabil EL KADHI  
University of Buraimi, Sultanate of Oman

Prof. Shihab A. Hameed  
IIUM University Malaysia, Malaysia

Dr. Eko K. Budiardjo  
University of Indonesia, Indonesia

## JAKARTA ATTRACTIONS

Jakarta is nicknamed the Big Durian, the thorny strongly-odored fruit native to the region as the city is seen as the Indonesian equivalent of the US city of New York (the Big Apple). In the colonial era, the city was also known as Koningin van het Oosten (Queen of the Orient), initially in the 17th century for the urban beauty of downtown Batavia's canals, mansions and ordered city layout. After expanding to the south in the 19th century, this nickname came to be more associated with the suburbs (e.g. Menteng and the area around Merdeka Square), with their wide lanes, many green spaces and villas.



Managed by BINA NUSANTARA